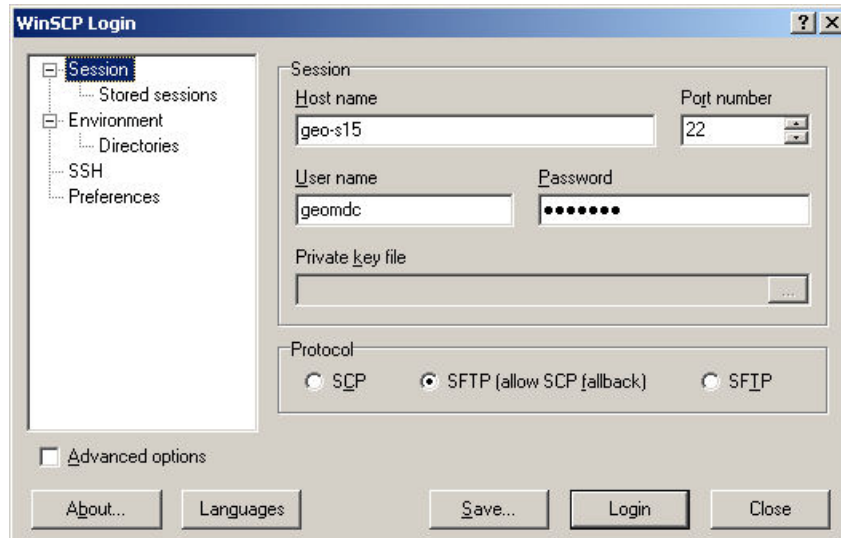


The School has an anonymous FTP site where you can place large files for collection by people external to the University.

To use the anonymous FTP site you will need a UNIX/Linux account - if you do not already have an account please e-mail [geo-support@leeds.ac.uk](mailto:geo-support@leeds.ac.uk) asking for one to be setup. You will be assigned a new password to go with your ISS username - we recommend you change your password to match your Windows logon password.

To upload files use a scp/sftp client to connect to geo-s15.leeds.ac.uk, placing your file(s) under /ftp/pub/<fullname>/ - on campus computers you can use WinSCP running from:-

N:\Earth&Environment\Geography\Software\WinSCP3\WinSCP3.exe



We recommend that you compress any file you upload in order to minimise download duration (in Windows Explorer, right-click on the file and select "Add To Archive..."), and if you are uploading more than one file it is best to create a single ZIP archive to facilitate easy of download.

Once you have uploaded your files, tell the recipient to access <ftp://geo-s15.leeds.ac.uk> using a web browser - they will be able to see your named directory, from where they can download the files. They can also use any ftp client by using anonymous as the username and their e-mail address as the password.

Files will automatically be removed after a week.

